



MEETINGS & EVENTS

The Greystone's refined charm and spectacular setting distinguishes it as a premier destination for life's most cherished celebrations and companies most important events. From exclusive board meetings and corporate retreats to private dinners and large celebrations, our well-appointed rooms and on-site professional event planner can organize every element of your guest's experience. Whether it's a black-tie

EST
1915



LAKE
TOXAWAY
NC

EVENT ROOMS

Meeting and social spaces in varying sizes and locations offer the ability to create the perfect setting for each gathering. Our expert planner is experienced in creating environments that suit individual



LOVELACE ROOM & LAKEVIEW DECK

800 square feet

Accommodates up
to 60 guests



ROCKEFELLER SUITE

800 square feet

Accommodates up
to 60 guests



THE LIBRARY

600 square feet

Accommodates up
to 40 guests



THE BOATHOUSE

1,100 square feet

Accommodates up
to 100 guests



THE SOUTH LAWN

Accommodates up
to 60 guests+

*Actual capacities and site fees may vary with set up • Outdoor venues have seasonal availability • Tenting may be required for outdoors spaces
Rental fees are based on room space and do not include pricing of food and beverage*

LAKE SIDE DINING ROOM

Anchored by a large stone fireplace, the Lakeside Dining Room is lined with windows that allow for breathtaking views of the lake and mountains.

A stunning location for any occasion.

- 1350 square feet
- Ceremony: 100 guests
- Seated dinner: 80 guests
- Cocktail reception: 130 guests



THE MANSION

This stately, Swiss style mansion has silently held court on the shores of scenic Lake Toxaway for over a century. Built by Savannah heiress Lucy Armstrong Moltz, The Greystone exudes warmth with her gracious fire lit rooms, elegant stone terraces and views that will take your breath away. Guests will enjoy the feeling of being in a grand private house, homey yet supremely special.

- Accommodates up to 150 guests
- Mansion rental is the common areas throughout the main level (approximately 2,000 square feet)
- Available to groups that have reserved all 30 guestrooms



EXCLUSIVELY YOURS

The Greystone Inn has it all; the beauty of the mountains and lake, the grandeur of a historical past, the comfort and charm of a small hotel and the amenities of a large resort. An exclusive use celebration ensures an ambiance so intimate and personal, you can't help but to relax and allow the day to unfold seamlessly in the company of your friends and family as you will have the entire property to yourselves.

- Exclusively Yours rental includes the Mansion, Lakeside Dining Room and all common areas throughout the property
- Available to groups that have reserved all 30 guestrooms



AMENITIES



ACCOMMODATIONS

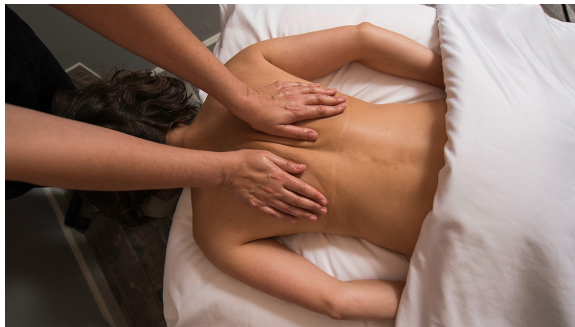
The 30 guest rooms and suites at The Greystone are all comfortable retreats, luxuriously appointed, each with a desk, charging station and complimentary Wi-Fi, some have fireplaces and lake views, others have private entrances and lakeside terraces.

Our exclusive Vacation Rentals provide additional accommodation options while maintaining The Greystone experience in some of Lake Toxaway's most treasured properties.



LAKE TOXAWAY COUNTRY CLUB

A short stroll from The Greystone, enjoy the only non-member entrée into the award-winning Lake Toxaway Country Club which includes an 18-hole championship golf course, five Har-Tru tennis courts, pickle ball court, outdoor swimming pool and world-class croquet lawns.



SPA

Enhance your experience with Greystone comfort. After a busy day of activities, your guests can unwind in the sanctuary of our spa. Refresh yourself with a facial; plan a spa day with friends or calm both body and mind with a blissful massage.



CATERING MENUS

Our award-winning chef will design a menu to impress the most well-traveled palates. Whether it's a formal evening meal, working lunch, or the right snacks for mid-morning munchies.



THE LAKE

Lake Toxaway is the largest private lake in the state of North Carolina. Guests explore the lake in canoes, kayaks and SUP boards. Boat rentals are also available to cruise, ski and tube. The limited access to the lake ensures those who fish, enjoy quite the catch in season.



MISS LUCY

For wooden boat enthusiasts, the Miss Lucy is a big attraction. This 26-passenger handcrafted mahogany boat escorts guests on a daily cruise.

A UNIQUE EXPERIENCE

The refined charm of a small hotel with the amenities of a large resort.



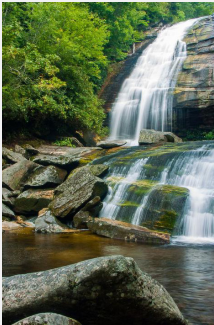
NEARBY ADVENTURE



Imagine 100,000 acres of pristine forests laced with epic hiking and mountain biking trails that you can follow all the way to the edge of the sky. Shimmering mountain streams teeming with native trout. Massive rock monoliths daring to be climbed. And, North America's largest concentration of waterfalls, millions of years in the making, waiting to be discovered... **Welcome to The Greystone Inn**



LOCAL ATTRACTIONS



PANTHERTOWN VALLEY
Known as the "Yosemite of the East" Panthertown Valley is considered one of North Carolina's mountain treasures with over 25 cascading waterfalls, 30 miles of trails, trout streams, sheer granite cliffs and panoramic views. A destination for hikers, mountain bikers, equestrians, rock climbers and anglers. Trailhead parking is 4.5 miles from The Greystone



GORGES STATE PARK
Find plunging waterfalls, rugged river gorges, sheer rock walls, and one of the greatest concentrations of rare and unique species in the eastern United States. Straddling the high ledges of the Jocassee Gorge, this lush park is a temperate rain forest. The park's first-rate Visitor Center serves as the perfect gateway to begin exploring Gorges breathtaking waterfalls and dramatic topography. 13 miles from The Greystone

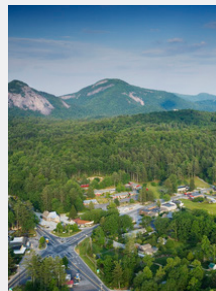


PISGAH NATIONAL FOREST
A land of mile-high peaks, cascading waterfalls, and heavily forested slopes, and hundreds of miles of trails. With over 88,000 acres in Transylvania County, Pisgah welcomes adventurers with such memorable destinations as Looking Glass Rock, Looking Glass Falls and Sliding Rock.

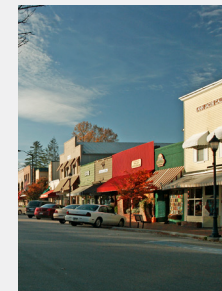
TOWNS TO EXPLORE



BREVARD
Less than 15 miles down the mountain, the City of Brevard is known for both its environmental and cultural resources. Take 64 S for a 13 mile stretch showcasing art galleries, studios, charming shops, farm-to-table dining and fresh local produce, Scenic 276 South is a great way to discover the artistry inspired by our mountains



CASHIERS
About 15 miles west of Lake Toxaway is Cashiers (pronounced CASH-ers), a popular vacation spot. Situated at the intersection of U.S. Hwy. 64 and N.C. 107, the village offers shopping, dining, festivals, and concerts. Cashiers is surrounded by the Nantahala National Forest and is near several natural areas that have been protected by the National Forest Service and The Nature Conservancy.



HIGHLANDS
This quaint town is a hidden jewel just 25 miles from The Greystone Inn, surrounded by the Nantahala National Forest and situated atop a plateau at elevation 4118 feet. Enjoy exceptional shopping, explore scenic drives & hiking trails, stroll beneath Dry Falls, drive under Bridal Veil Falls or view Whitewater Falls – the tallest east of the Rockies at 411 feet.

ACTIVITIES

The mountain air, open skies and, spirit and beauty of nature are the luxurious backdrop of productive and energetic meetings. Colleagues may break from meetings to golf, play tennis or croquet, go for a hike or a massage. There are endless things to do at The Greystone.

Customized team-building activities such as sporting clay tournaments, fishing rodeos, short-game golf competitions, cocktail and culinary classes are among the list of activities that await your group. Greystone retreats offer the perfect blend of productive and team-building time.



GOLF

Highlighted by sweeping mountain vistas and breathtaking topography, the 18-hole championship golf course at Lake Toxaway Country Club is one of the premier courses in western North Carolina.



TENNIS

Adjacent to The Greystone Inn, the courts could not be more convenient. The Lake Toxaway Country Club's facilities include five Har-Tru fast-dry courts and a fully stocked Pro Shop.



CROQUET

Just steps from The Greystone Inn, the immaculate bentgrass lawns set the stage for a relaxing, or competitive, round of croquet.



FITNESS CENTER

Maintain your health and wellness goals in this 2,000-square foot fitness center offering a full complement of state-of-the-art equipment.



SWIMMING POOL

As an alternative to the lake, guests enjoy the lake toxaway country club swimming pool just outside our back door which is equipped with restroom facilities and an outdoor fireplace.



PICKLE BALL

Pickle ball facilities include three pickle ball courts. Courts are open May-Oct. A Certified Pickle Ball Instructor offers private & group lessons for adults & children of all ages.



FLY FISHING

Our area is known for some of the best trout waters anywhere, with hundreds of miles of creeks, streams and rivers to fish.



FALCONRY

The ancient 'Sport of Kings' is an up close and personal "hands on" experience with a bird of prey



HIKING

The majestic mountains and valleys overlooking and surrounding The Greystone feature thousands of miles of trails ready and waiting to be explored.



LAKE FISHING

There are 8 species of fish in Lake Toxaway; rainbow and brown trout, large and small mouth bass, walleye, catfish and blue gill, all game fish.



HORSE BACK RIDING

Explore the mountains on horseback and enjoy spectacular views! Horses and guided trail rides are available in Pisgah National Forest, DuPont State Park Forest and Gorges State Park.



MISS LUCY & LUCY II

Miss Lucy is a 26-passenger handcrafted mahogany boat escorts guests on a daily cruise around the lake or up to 10 guests can enjoy a private cruise on the Lucy II. The quiet leisurely pace is perfect for relaxing with a cocktail.

ACTIVITIES



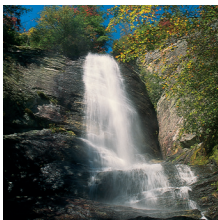
YOGA

If you've come to escape we've got the solution to tune out the distractions. We can arrange private and group yoga and meditation classes.



ROCK CLIMBING

Whether you're a beginner or an expert, our area has some of the best climbing in the Southeast.



EXPLORING WATERFALLS

With over 250 waterfalls in the area, it's not surprising this area is also known as the "Land of the Waterfalls".



SHOPPING

Discover the artistry inspired by the mountains in the quaint town of Cashiers and down the mountain in Brevard. Explore art galleries, studios and charming shops



BOATING

Lake Toxaway is the largest private lake in the state. Guests enjoy kayaking, paddle boarding, canoeing, cruising, waterskiing and tubing.



CYCLING & BIKING

Transylvania County is home to some of the finest cycling in North America. BIKE Magazine calls the area "America's Best Kept Secret." Between Pisgah and DuPont State Forest there are hundreds of miles of



RIVER SNORKELING

An incredible and rarely seen perspective of our rivers revealing natural wonders and curious animal behavior



STARGAZING

Pisgah Astronomical Research Institute PARI is located at the site of a former satellite tracking station operated by NASA. Today, it remains focused on the heavens – but with an emphasis on education. Enjoy an evening at PARI gazing the night sky through optical telescopes.



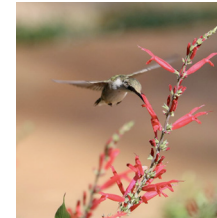
BREWERY TOURS

With Oskar Blues, Wicked Weed and Sierra Nevada all close, there's always an opportunity to explore the incredible local breweries.



RIVER TUBING

Enjoy a 2-hour tubing adventure flowing down two miles of class one water on the French Broad River, the third oldest river in the world!



BIRD WATCHING

Lake Toxaway is abundant with many kinds of bird life. Mornings are extra special when we see the cardinals, chickadees, nuthatches, finches, and the hummingbirds we call back in the spring.

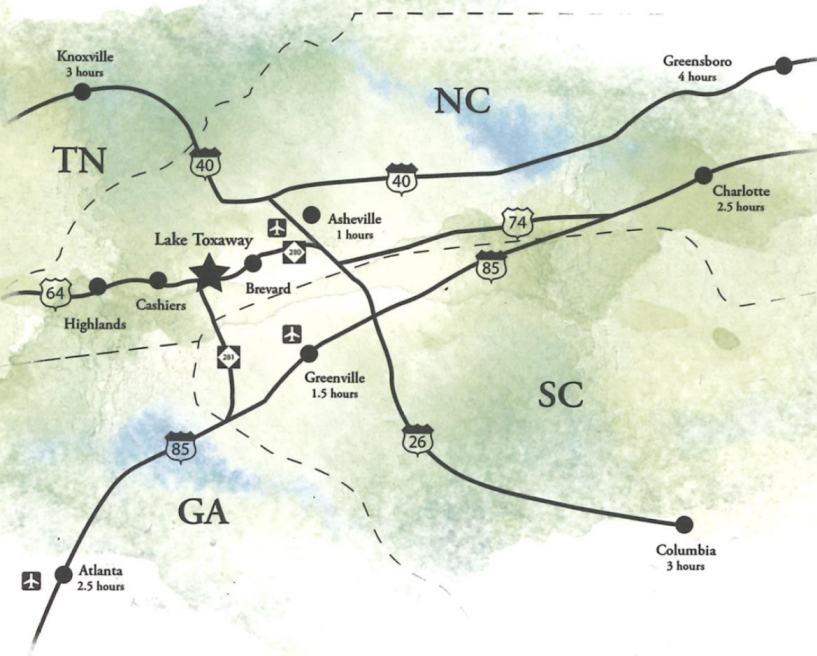


SOUTHERN HIGHLANDS RESERVE

A private native plant arboretum and research center dedicated to sustaining the natural ecosystems of the Blue Ridge Mountains. The varied topography gardens and forest types found on the 120 acres emulate many of the plant communities found in the higher reaches of the southern Appalachians.

Private group tours are guided by SHR's Executive Director Kelly Holdbrooks and provide the opportunity for a deeply personal look at the true beauty and wonder of the Reserve.

DIRECTIONS/RESOURCES



NEARBY AIRPORTS

ASHEVILLE REGIONAL AIRPORT
(828) 684-2226
Most major airlines served
Approximate travel time is 45 minutes

COLUMBIA METROPOLITAN AIRPORT
(803) 822-5000
Most major airlines served
Approximate travel time is 3 hours

HARTSFIELD-JACKSON ATLANTA INTERNATIONAL AIRPORT
(800) 897-1910
Most major airlines served
Approximate travel time is 3 hours

CHARLOTTE DOUGLASS INTERNATIONAL AIRPORT
(704) 359-4000
Most major airlines served
Approximate travel time is 2½ hours

GREENVILLE-SPARTANBURG INTERNATIONAL AIRPORT
(864) 877-7426
Most major airlines served