

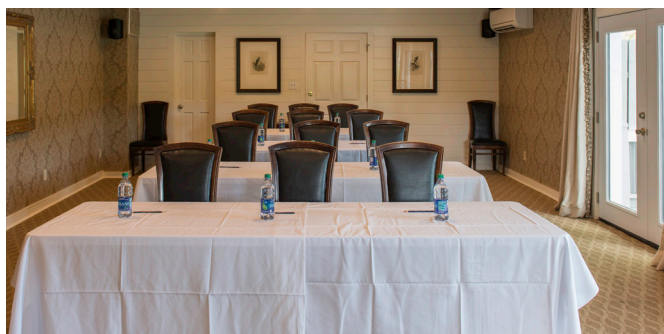
MEETINGS AND EVENTS

The Greystone Inn's refined charm and spectacular setting distinguishes it as a premier destination for life's most cherished celebrations and company's most important events. From exclusive board meetings and corporate retreats to private dinners and large celebrations, our well-appointed rooms and on-site professional event planner can organize every element of your guest's experience. Whether it's a black tie gala that's the talk of the town or the perfect lakeside setting for creating ideas in a corporate retreat, we'll work with you to make your vision a reality. The Greystone Inn offers the charm of a small hotel with the amenities of a large resort.



MEETINGS AND EVENTS

The Lovelace Room and Deck



ACCOMMODATES

Total Size	800 s.f.
Theater Seating	60
Classroom Seating	48
Conference Table	30
U-Shape Table	54
Cocktail Reception	60
Seated Meal	40
Seated Meal with Deck	60

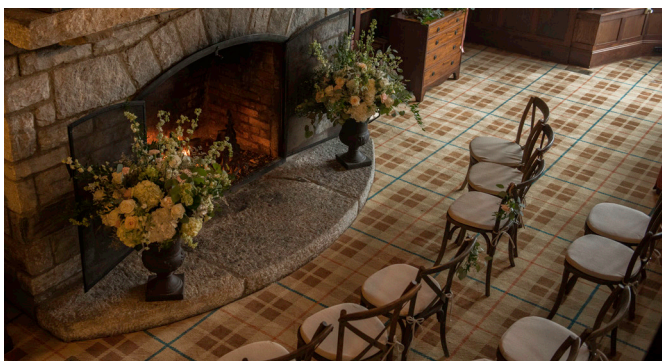
Actual capacities and site fee may vary with set-up. Outdoor venues have seasonal availability. Tenting may be required for outdoor spaces.

Site fees are based on room space and do not include food and beverage.



MEETINGS AND EVENTS

Rockefeller Suite



ACCOMMODATES

Total Size	800 s.f.
Theater Seating	64
Classroom Seating	42
Conference Table	28
U-Shape Table	30
Cocktail Reception	60
Seated Meal	52

Actual capacities and site fee may vary with set-up. Outdoor venues have seasonal availability. Tenting may be required for outdoor spaces.

Site fees are based on room space and do not include food and beverage.



MEETINGS AND EVENTS

The Library

Available to groups that have reserved all 16 Mansion rooms with a two-night minimum.



ACCOMMODATES

Total Size	600 s.f.
Theater Seating	40
Cocktail Reception	40
Seated Meal	40
Seated Meal with Buffet	30

Actual capacities and site fee may vary with set-up. Outdoor venues have seasonal availability. Tenting may be required for outdoor spaces.

Site fees are based on room space and do not include food and beverage.



MEETINGS AND EVENTS

The South Lawn



ACCOMMODATES

Total Size	3,000 s.f.
Theater Seating	150
Cocktail Reception	100+
Seated Meal	146

Actual capacities and site fee may vary with set-up. Outdoor venues have seasonal availability. Tenting may be required for outdoor spaces.

Site fees are based on room space and do not include food and beverage.



MEETINGS AND EVENTS

The Restaurant

Available to groups that have reserved all 30 rooms with a two-night minimum.



ACCOMMODATES

Total Size	1,350 s.f.
Theater Seating	128
Classroom Seating	74
Cocktail Reception	125
Seated Meal	108

Actual capacities and site fee may vary with set-up. Outdoor venues have seasonal availability. Tenting may be required for outdoor spaces.

Site fees are based on room space and do not include food and beverage.



MEETINGS AND EVENTS

Exclusively Yours

Elevate your retreat with the Exclusively Yours as we close the property for the duration of your stay. Enjoy access to the Mansion, Restaurant and communal spaces, allowing you to tailor meetings, activities and events to your group's needs. Indulge in a culinary journey with all meals included, commencing with dinner on arrival and concluding with breakfast on the day of departure. It's not just a stay; it's an exclusively tailored experience for your success.



Actual capacities and site fee may vary with set-up. Outdoor venues have seasonal availability. Tenting may be required for outdoor spaces.

Site fees are based on room space and do not include food and beverage.



MEETINGS AND EVENTS

Amenities



ACCOMMODATIONS

The 30 guest rooms and suites at The Greystone Inn are all comfortable retreats, luxuriously appointed, each with a desk, charging station and complimentary wi-fi, some have fireplaces and lake views, other have private entrances and lakeside terraces.

Our exclusive Vacation Rentals provide additional accommodation options while maintaining The Greystone experience in some of LakeToxaway's most treasured properties.



THE GREYSTONE INN SPA

Enhance your experience with Greystone comfort. After a busy day of activities, your guests can unwind in the sanctuary of our spa. Refresh yourself with a facial; plan a spa day with friends or calm both body and mind with a blissful massage.



CATERING MENUS

Our award-winning chef will design a menu to impress the most well-traveled palates. Whether it's a formal evening meal, working lunch, or the right snacks for mid-morning munchies.



LAKE TOXAWAY COUNTRY CLUB

A short stroll from The Greystone Inn, enjoy the only non-member entree into the award-winning Lake Toxaway Country Club which includes an 18-hole championship gold course, five Har-Tru tennis courts, pickleball courts, outdoor swimming pool and a world-class croquet lawns.



THE LAKE

Lake Toxaway is the largest private lake in the state of North Carolina. Guests explore the lake in canoes, kayaks, and SUP boards. Boat rentals are also available to cruise, ski and tube. The limited access to the lake ensures those who fish, enjoy quiet the catch in season.



MISS LUCY

For wooden boat enthusiasts, the Miss Lucy is a big attraction. This 22-passenger handcrafted mahogany boat escorts guests on a daily cruise.

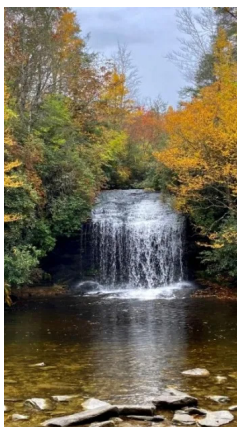


MEETINGS AND EVENTS

Nearby Adventures

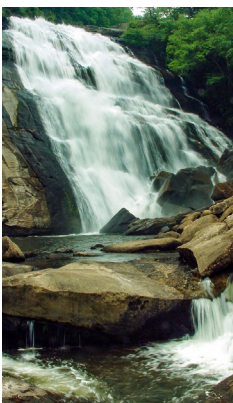
Imagine 100,000 acres of pristine forests laced with epic hiking and mountain biking trails that you can follow all the way to the edge of the sky. Shimmering mountain streams teeming with native trout. Massive rock monoliths daring to be climbed. And, North America's largest concentration of waterfalls, millions of years in the making, waiting to be discovered...Welcome to The Greystone Inn on Lake Toxaway.

Local Attractions



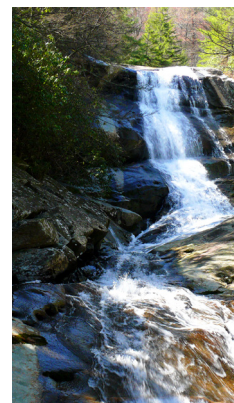
PANTHERTOWN VALLEY

Known as the "Yosemite of the East" Panthertown Valley is considered one of North Carolina's mountain treasures with over 25 cascading waterfalls, 30 miles of trails, trout streams, sheer granite cliffs and panoramic views. A destination for hikers, mountain bikers, equestrians, rock climbers and anglers. Trail head parking is 4.5 miles from The Greystone Inn.



GORGES STATE PARK

Find plunging waterfalls, rugged river gorges, sheer rock walls, and one of the greatest concentrations of rare and unique species in the eastern United States. Straddling the high ledges of the Jocassee Gorge, this lush park is a temperate rain forest. The park's first-rate Visitor Center serves as the perfect gateway to begin exploring Gorges breathtaking waterfalls and dramatic topography.



PISGAH NATIONAL FOREST

A land of mile-high peaks, cascading waterfalls, and heavily forested slopes, and hundreds of miles of trails. With over 88,000 acres in Transylvania County, Pisgah Forest welcomes adventurers with such memorable destinations as Looking Glass Falls and Sliding Rock.

Towns to Explore



BREVARD

Less than 15 miles down the mountain, the City of Brevard is known for both its environmental and cultural resources. Take 64S for a 13 mile stretch showcasing art galleries, studios, charming shops, farm-to-table dining and fresh local produce. Scenic 276 South is a great way to discover the artistry inspired by the mountains.



CASHIERS

About 15 miles west of Lake Toxaway is Cashiers (pronounced CASH-ers), a popular vacation spot. Situated at the intersection of U.S. Highway 64 and N.C. 107, the village offers dining, festivals, and concerts. Cashiers is home to Whitewater Falls - the tallest east of the Rockies at 411 feet located within Gorges State Park.



HIGHLANDS

This quaint town is a hidden jewel just 25 miles from The Greystone Inn, surrounded by the Nantahala National Forest and situated atop a plateau at an elevation of 4,118 feet. Enjoy exceptional shopping, explore scenic drives & hiking trails, stroll beneath Dry Falls and Bridal Veil Falls.



MEETINGS AND EVENTS

Activities

The mountain air, open skies and spirit and beauty of nature are the luxurious backdrop of productive and energetic meetings. Colleagues may break from meetings to go, play tennis or croquet, go out for a hike or a massage.

Customized team-building activities such as clay tournaments, fishing rodeos, short-game golf competitions, cocktail and culinary classes are among the list of activities that await your group. Greystone Inn retreats offer the perfect blend of productive and team-building time.



GOLF

Highlighted by sweeping mountain vistas and breathtaking topography, the 18-hole championship golf course at Lake Toxaway Country Club is one of the premier courses in western North Carolina.



TENNIS

Adjacent to The Greystone Inn, the courts could not be more convenient. The Lake Toxaway Country Club's facilities include five Har-Tru fast-dry courts and a fully stocked Pro Shop.



CROQUET

Just steps from The Greystone Inn, the immaculate bentgrass lawns set the stage for a relaxing, or competitive round of croquet. Just don't forget your Croquet Whites!



FITNESS CENTER

Maintain your health and wellness goals in this 2,000 square foot Fazio fitness center offering a full complement of state-of-the-art equipment.



SWIMMING POOL

As an alternative to the lake, guests enjoy use of the swimming pool just outside our back door which is equipped with restroom facilities and an outdoor fireplace.



PICKLEBALL

The Lake Toxaway Country Club offer three pickleball courts just steps from The Greystone Inn.



FLY FISHING

Our area is known for some of the best trout waters anywhere, with hundreds of miles of creeks, streams and rivers to fish.



FALCONRY

The ancient 'Sport of Kings' is an up close and personal "hands-on" experience with these majestic birds of prey.



MISS LUCY

This 22-passenger handcrafted mahogany boat escorts guests on a daily cruise around the lake. The quiet leisurely pace is perfect for relaxing with a cocktail.



LAKE FISHING

There are eight species of fish in Lake Toxaway; Rainbow Trout, Brown Trout, Large and Small Mouth Bass, Walleye, Catfish and Blue Gill, all game fish.



HORSE BACK RIDING

Explore the mountains on horseback and enjoy spectacular views! Horses and guided tours are available in Pisgah National Forest, DuPont State Forest and Gorges State Park.



HIKING

The majestic mountains and valleys overlooking and surrounding The Greystone feature thousands of miles of trails ready and waiting to be explored.



MEETINGS AND EVENTS

Activities



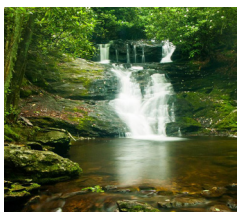
YOGA

If you've come to escape, we have the solution to tune out the distractions. We can arrange private and group yoga and meditation classes.



ROCK CLIMBING

Whether you're a beginner or an expert, our area has some of the best climbing in the Southeast.



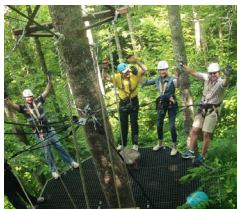
EXPLORING WATERFALLS

With over 250 waterfalls in the area, it's not surprising this area is known as the "Land of Waterfalls." There is a waterfall for every ability level.



SHOPPING

Discover the artistry inspired by the mountains in the quaint towns of Brevard the Highlands. Explore art galleries, studios and charming shops. This area is known for its exquisite pottery.



ZIPLINING

Spend an afternoon at Highlands Aerial Park, a world-class outdoor experience for all ages where every participant and spectator feels welcome and included in the experience.



CYCLING & BIKING

Transylvania County is home to some of the finest cycling in North America. BIKE Magazine calls the area "America's Best Kept Secret." Between Pisgah and DuPont, there are hundreds of miles of epic single-tracks to explore.



RIVER SNORKELING

An incredible and rarely seen perspective of our rivers revealing natural wonders and curious animal behavior.



STARGAZING

Pisgah Astronomical Research Institute (PARI) is located at the site of a former satellite tracking station operated by NASA. Today, it remains focused on the heavens - but with an emphasis on education.



BREWERY TOURS

With Oskar Blues, Wicked Weed and Sierra Nevada all close by, there's always an opportunity to explore the incredible local breweries.



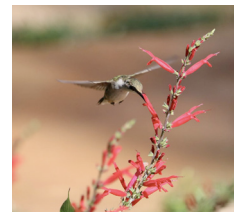
BOATING

Lake Toxaway is the largest private lake in the state. Guests enjoy kayaking, paddle boarding, canoeing, cruising, waterskiing, and tubing.



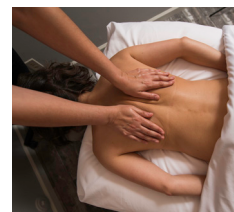
RIVER TUBING

Enjoy a two-hour tubing adventure flowing down two miles of Class One water on the French Broad River, the third oldest river in the world!



BIRD WATCHING

Lake Toxaway is abundant with many species of birds. Mornings are extra special when we see cardinals, chickadees, nuthatches, finches and the hummingbirds.



THE GREYSTONE INN SPA

Our spa treatments are designed for men & women and are performed in the comfort of our private treatment rooms. Our staff is highly trained, and are licensed and fully certified to ensure that you have the experience.



SOUTHERN HIGHLANDS RESERVE

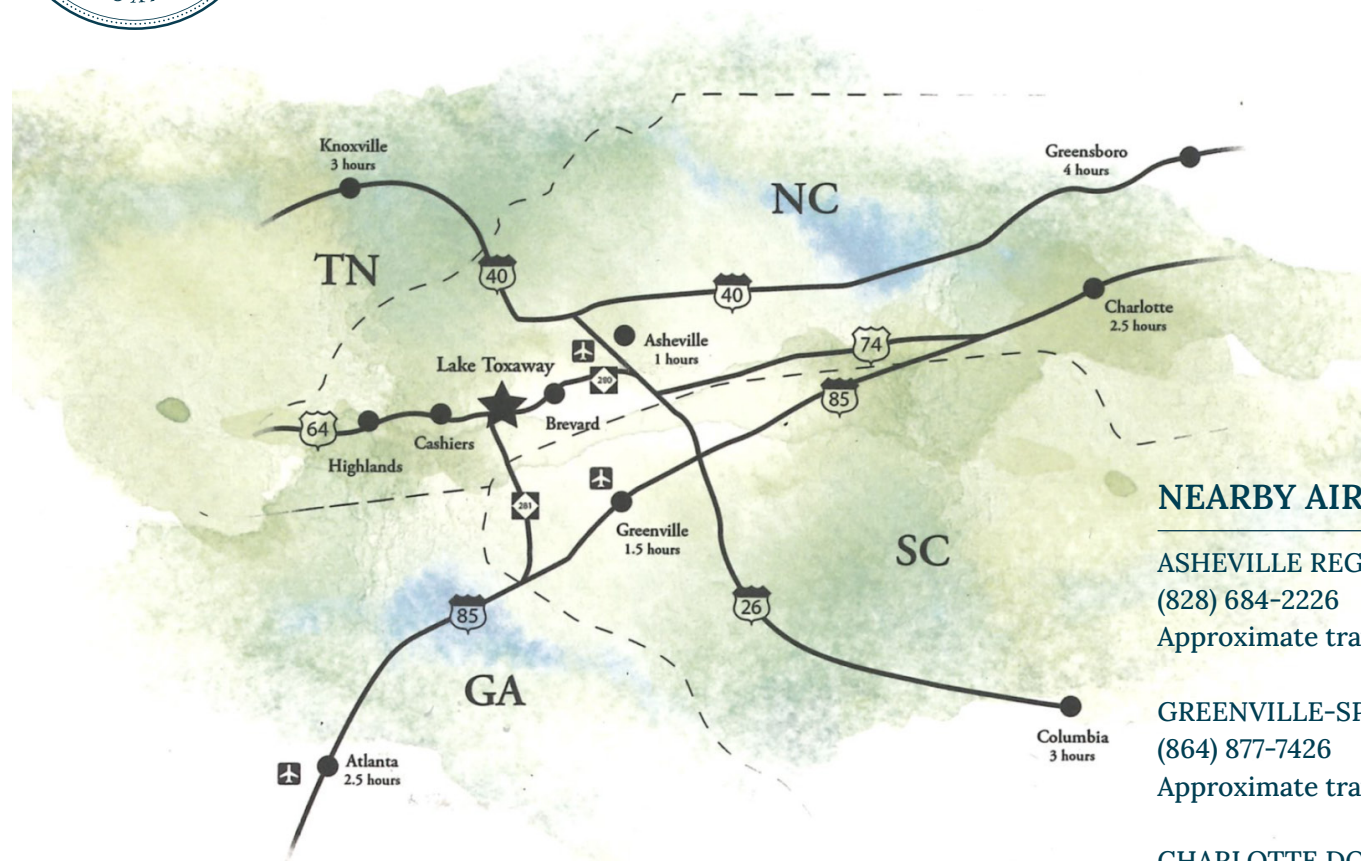
A private native plant arboretum and research center dedicated to sustaining the natural ecosystem of the Blue Ridge Mountains. The varied topography gardens and forest types found on the 120 acre emulate many of the plant communities in the higher reaches of the Southern Appalachian.

Private Group Tours are guided by SHR's Executive Director, Kelly Holdbrooks and provide the opportunity for a deeply personal look at the true beauty and wonder of the Reserve.



MEETINGS AND EVENTS

Directions and Resources



NEARBY AIRPORTS

ASHEVILLE REGIONAL AIRPORT

(828) 684-2226

Approximate travel time is 45 minutes

GREENVILLE-SPARTANBURG INTERNATIONAL AIRPORT

(864) 877-7426

Approximate travel time is 1½ hours

CHARLOTTE DOUGLASS INTERNATIONAL AIRPORT

(704) 359-4000

Approximate travel time is 2½ hours

HARTSFIELD-JACKSON ATLANTA INTERNATIONAL AIRPORT

(800) 897-1910

Approximate travel time is 3 hours

COLUMBIA METROPOLITAN AIRPORT

(803) 822.5000

Approximate travel time is 3 hours



PROPERTY MAP

The Greystone Inn and Lake Toxaway Country Club

